

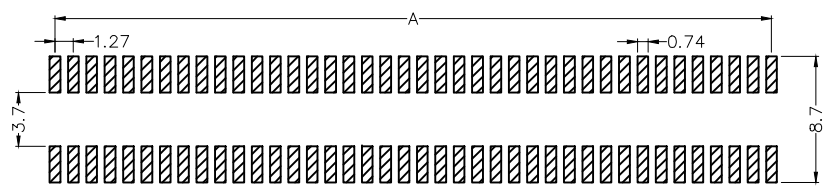
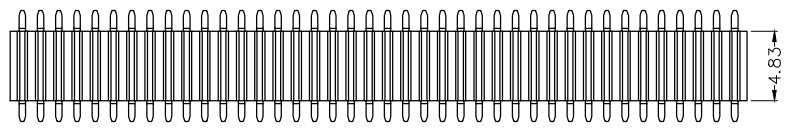
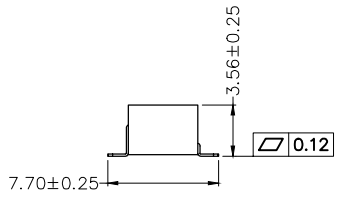
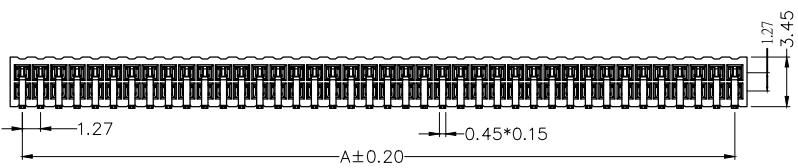
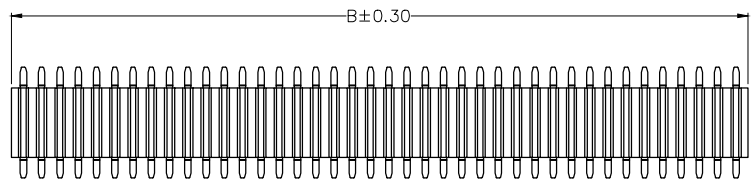
1 2 3 4 5 6 7 8

REV	LOCATIONS	DESCRIPTION	DATE	REVISER	APPD

**SPECIFICATIONS**

**Electrical**  
 Current Rating: 1A AC(rms)/DC  
 Voltage Rating: 250V AC(rms)/DC  
 Contact Resistance: 20 mΩ Max  
 Insulation Resistance: 1000 MΩ MIN  
 Withstanding Voltage: 500V AC r.m.s  
 Temperature Range—Operating: -40°C~+85°C

**Material and Plating**  
 Housing: Glass Filled Polyester (UL 94V-0)  
 Pin: Phosphor Bronze/Gold Plated



Recommended P.C.Board Layout

**Ordering Information**

FFH 127 33 — D XX B 1 XX X BK X  
 1 2 3 4 5 6 7 8 9 10 11

1   Category FFH—Female Header	2   Series Number 127—Pitch1.27mm	3   Distinction No. 33	4   Row Option D—Double Row	5   Circuits XX	6   Entry Angle B—90° Angle
7   Plating 1—Gold Plated	8   Thickness of Plating 00—Gold Flash 01—1μ" 15—15μ" Custom plate available	9   Material—Resin 4—PA6T 5—PA9T	10   Color—Resin BK—Black	11   Packaging M—Reel L—Tube	

<p>THIRD ANGLE PROJECTION</p>	GENERAL TOLERANCES (UNLESS SPECIFIED)		APPROVE BY FRANK	DATE 19/AUG/22	PART NO. FFH12733-DXXB1XXXBKXX	ITEM NO. FFH12733	<p>Building Technology Cornerstone</p>	
	X.±0.30	X'.±5'	CHECKED BY CHERRY	DATE 19/AUG/22	TITLE Board to Board(Female Header) Pitch 1.27mm 90° Angle(SMT)	REV 0		SHEET NO. 1/2
	DESIGN UNITS Metric	X.XX±0.20	.X'±2'	DRAWN BY MATT	DATE 19/AUG/22	THIS DRAWING CONTAINS INFORMATION THAT IS PROPRIETARY TO TXGA INDUSTRIAL ELECTRONICS(S.Z)CO.,LTD AND SHOULD NOT BE USED WITHOUT WRITTEN PERMISSION		
	SCALE 5:1	SIZE A4	X.XX±0.15	.XX'±1'	X.XXX±0.10	.XXX'±0.5'		

1 2 3 4 5 6 7 8

REV	LOCATIONS	DESCRIPTION	DATE	REVISER	APPD

A

A

B

B

C

C

D

D

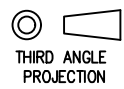

E

E

F

F

Circuits (n)	Part No.	Dimensions(mm)		Circuits (n)	Part No.	Dimensions(mm)	
		A	B			A	B
4	FFH12733-D04B1XXXBKXX	1.27	2.94	44	FFH12733-D44B1XXXBKXX	26.67	28.34
6	FFH12733-D06B1XXXBKXX	2.54	4.21	46	FFH12733-D46B1XXXBKXX	27.94	29.61
8	FFH12733-D08B1XXXBKXX	3.81	5.48	48	FFH12733-D48B1XXXBKXX	29.21	30.88
10	FFH12733-D10B1XXXBKXX	5.08	6.75	50	FFH12733-D50B1XXXBKXX	30.48	32.15
12	FFH12733-D12B1XXXBKXX	6.35	8.02	52	FFH12733-D52B1XXXBKXX	31.75	33.42
14	FFH12733-D14B1XXXBKXX	7.62	9.29	54	FFH12733-D54B1XXXBKXX	33.02	34.69
16	FFH12733-D16B1XXXBKXX	8.89	10.56	56	FFH12733-D56B1XXXBKXX	34.29	35.96
18	FFH12733-D18B1XXXBKXX	10.16	11.83	58	FFH12733-D58B1XXXBKXX	35.56	37.23
20	FFH12733-D20B1XXXBKXX	11.43	13.10	60	FFH12733-D60B1XXXBKXX	36.83	38.50
22	FFH12733-D22B1XXXBKXX	12.70	14.37	62	FFH12733-D62B1XXXBKXX	38.10	39.77
24	FFH12733-D24B1XXXBKXX	13.97	15.64	64	FFH12733-D64B1XXXBKXX	39.37	41.04
26	FFH12733-D26B1XXXBKXX	15.24	16.91	66	FFH12733-D66B1XXXBKXX	40.64	42.31
28	FFH12733-D28B1XXXBKXX	16.51	18.18	68	FFH12733-D68B1XXXBKXX	41.91	43.58
30	FFH12733-D30B1XXXBKXX	17.78	19.45	70	FFH12733-D70B1XXXBKXX	43.18	44.85
32	FFH12733-D32B1XXXBKXX	19.05	20.72	72	FFH12733-D72B1XXXBKXX	44.45	46.12
34	FFH12733-D34B1XXXBKXX	20.32	21.99	74	FFH12733-D74B1XXXBKXX	45.72	47.39
36	FFH12733-D36B1XXXBKXX	21.59	23.26	76	FFH12733-D76B1XXXBKXX	46.99	48.66
38	FFH12733-D38B1XXXBKXX	22.86	24.53	78	FFH12733-D78B1XXXBKXX	48.26	49.93
40	FFH12733-D40B1XXXBKXX	24.13	25.80	80	FFH12733-D80B1XXXBKXX	49.53	51.20
42	FFH12733-D42B1XXXBKXX	25.40	27.07				

 <p>THIRD ANGLE PROJECTION</p>	GENERAL TOLERANCES (UNLESS SPECIFIED)		APPROVE BY FRANK	DATE 19/AUG/22	PART NO. FFH12733-DXXB1XXXBKXX	ITEM NO. FFH12733	 <p>Building Technology Cornerstone</p>		
	DESIGN UNITS Metric	X.±0.30	X'±5"	CHECKED BY CHERRY	DATE 19/AUG/22	TITLE Board to Board(Female Header) Pitch 1.27mm 90° Angle(SMT)		REV 0	SHEET NO. 2/2
	SCALE 5:1	SIZE A4	X.XX±0.15	.XX'±1"	DRAWN BY MATT	DATE 19/AUG/22		THIS DRAWING CONTAINS INFORMATION THAT IS PROPRIETARY TO TXGA INDUSTRIAL ELECTRONICS(S.Z)CO.,LTD AND SHOULD NOT BE USED WITHOUT WRITTEN PERMISSION	